



2023

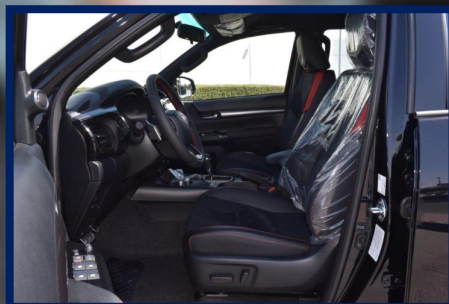
# HILUX

## GR SPORT

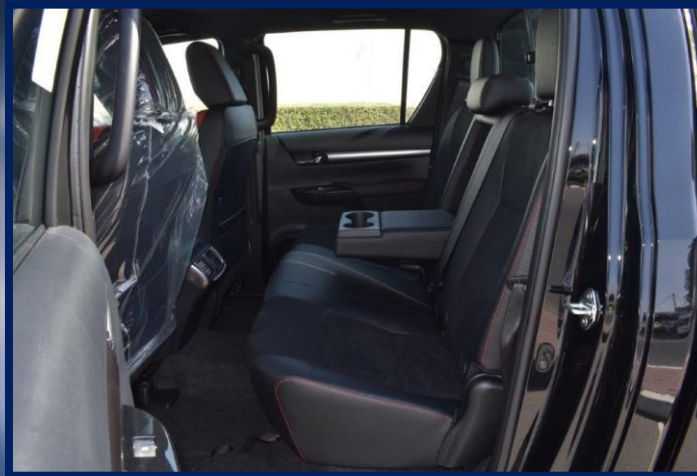
2.8L DIESEL AUTOMATIC DOUBLE CABIN

**BOOK NOW**





**MODEL CODE-GUN126L-DTTHXV**  
**ENGINE & DISPLACEMENT CC-2755**  
**DRIVETRAIN HP SAE (NET)-201**  
**TORQUE KGM SAE (NET)-51**  
**ENGINE TYPE-4 CYL,16V, DOHC**  
**FUEL SYSTEM-EFI W/ COMMON RAIL& INTERCOOLER (EURO4 W/OBD)**  
**FUEL TYPE-DIESEL**  
**FUEL TANK CAPACITY LTRS-80 LTR**  
**CATALYTIC CONVERTER**  
**TRANSMISSION-6-SPEED A/T**  
**4WD OPTIONS PART-TIME**  
**DIFF. OPTION-REAR DIFF LOCK W/ AUTO DISCONNECT DIFFERENTIAL(ADD)**  
**TIRE SIZE-265 / 60 R18 ALL TERRAIN <GR-SPORT>**  
**WHEEL CAP-ALLOY W/ALLOY SPARE TIRE**  
**STEERING-POWER/TILT WITH/WITH & TELESCOPIC**  
**BRAKE FRONT/REAR-V.DISC/DRUM**  
**SUSPENSION-FRONT/REAR MONOTUBE GR-S SUSPENSION**  
**SAFETY-ABS + EBD + BA + VSC**  
**AIR BAGS-D + P + KNEE (DRIVER)**  
**HILL ASSIST CONTROL + TRAILER SWAY CONTROL WITH**  
**BUMPER-FRONT & REAR- COLOUR KEYED /STEEL STEP PAINTED <GR-SPORT>**  
**DOOR HANDLES-COLOURD**  
**HIGH MOUNT STOP LAMP LED**  
**OUTER MIRROR COLOUR KEYED BLACK WITH TURN SIGNAL + WELCOME LIGHT + POWER**  
**SIDE STEP**  
**SIDE STRIPE -WITH GR-SPORT DESIGN (OE)**  
**WINDSHIELD GLASS-GREEN LAMINATED W/TOP SHADE (IR CUT)**  
**CONSOLE BOX-CONSOLE BOX WITH SOFT LID**  
**FRONT SEAT-FR. SEAT BELT-3PELRX2 W/PT & FL**  
**VERTICAL SEAT ADJUSTER-W/ DRIVER**  
**REAR SEAT BELT-3PELRX2 + 2PNRX1**  
**HEAD REST-WITH (3 NO.)**  
**CENTRE ARMREST-W/ CUP HOLDER**  
**DIGITAL CLOCK- WITH**  
**INNER REAR VIEW MIRROR-DAY/NIGHT**



SEAT MATERIAL-GR-S SUEDE + LEATHER  
SEATING CAPACITY-5  
SUN VISOR-DRIVER (W/HOLDER) + PASSENGER (W/MIRROR & LID)  
TACHOMETER-WITH  
AC/HEATER-WITH (AUTO) + REAR DUCT / WITH  
ANTENNA-SHARK FIN  
AUDIO-8" NAVIGATION, USB, BT, 6 SPKR  
KEYLESS ENTRY-SMART + PUSH START  
METER ILLUMINATION CONTROL  
POWER DOOR LOCK  
POWER WINDOW  
RADIO-AM/FM  
WIPER FRONT-ADJ. INTERMITTENT: MIST  
LIGHT CONTROL SYSTEM-W/ FOLLOW ME HOME  
ANTI-THEFT IMMOBILISER-WITH  
BACK VIEW CAMERA-WITH (OE) + PVM  
BEDLINER-WITH <GR-SPORT>  
COOL GLOVE BOX  
CRUISE CONTROL  
DOOR COURTESY LAMP WITH REFLECTOR  
ECO/POWER MODE  
FLOOR MAT (OE)  
FRONT FOG LAMP-WITH(LED) <GR-SPORT>  
HEADLAMP-LED W/ AUTO LEVELLING  
MUFFLER CUTTER (OE)- WITH  
MULTI INFO DISPLAY-W/ TFT TYPE  
RADIATOR GRILLE-GREY PAINTED  
REAR FOG LAMP  
REAR WINDOW SLIDE TYPE  
SAFETY KIT  
SHIFT LEVER KNOB- W/ LEATHER  
STEERING WHEEL-GR-S SOFT LEATHER W/ SWITCHES  
TAILGATE LIFT ASSIST  
GR-SPORT-DECKBAR, BEDLINER, TAILGATE LIFT ASSIST, GRILLE - PAINTED, BLACK  
OVERFENDER - WIDE, GRS LOGO, SPORTY SEATS  
IR CUT GLASS (FR + SIDE + RR), SENSORS-FR2 + RR4



HILUX  
GR SPORT

## TOYOTA HILUX GR-SPORT PICKUP

The 2.8L 4-cylinder turbocharged 2.8L 4-cylinder engine of the GR Sport has received a 10% power boost, making it the most performance-oriented diesel HiLux to date. Double cab 4x4 with paddle shifters and a 6-speed automatic transmission. brimming with top-notch features to get you, your gear, and where you want to be.